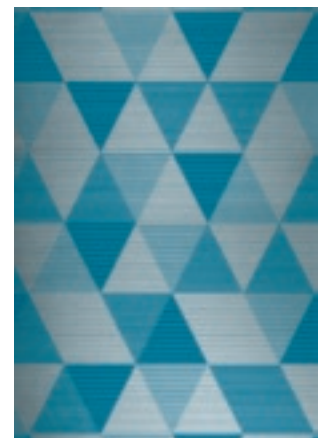
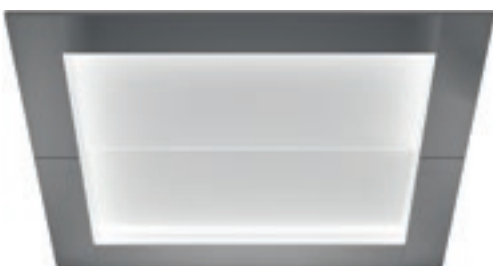
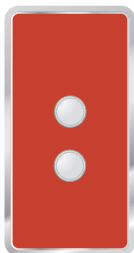
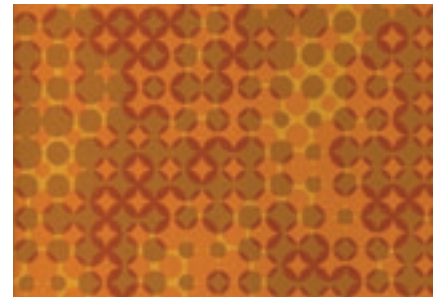
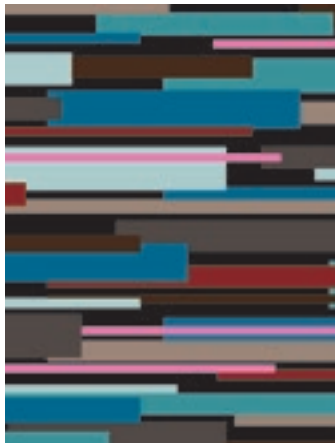
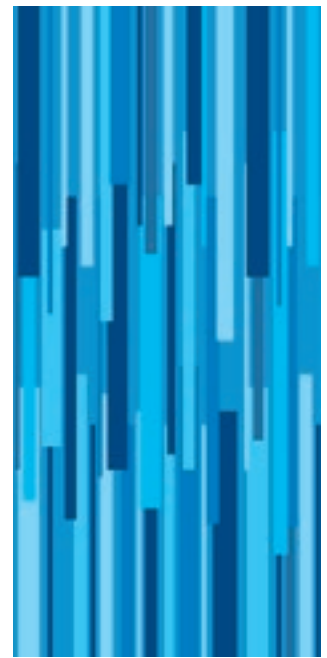


# MATERIALS AND ACCESSORIES

KONE design collection

CREATING AN ELEVATOR	4
WALL FINISHES	6
FLOOR FINISHES	9
FRONT WALL FINISHES	10
CAR / LANDING DOOR FINISHES	11
SIGNALIZATIONS	12
CEILINGS	18
HANDRAILS	20
SEATS	21
BUFFER RAILS	21
SKIRTING	21
TENANT DIRECTORIES AND INFO SCREENS	22
MIRRORS	22



# CREATING THE PERFECT ELEVATOR

When it comes to creating a consistent look and feel throughout your building, elevators play a key role. By freely combining KONE's flexible and versatile selection of materials and accessories, you can create an elevator interior that matches your building's design perfectly.

## HOW TO CREATE YOUR CUSTOM ELEVATOR DESIGN

### 1 Choose the combination of wall, floor, and door material

Our wide range of available choices ensures that you can find the perfect combination to match your building's design, budget, and intended use requirements. For example, if durability and comfort are important, stone flooring is long-lasting and maintains its appearance even under heavy use, while colored or wood laminate wall finishes help to create a warm ambience inside the car. For a more exclusive look and feel, our new patterned steel and 3D glass finishes can really make your elevator stand out.

### 2 Select your ceiling design

KONE offers a wide range of different ceiling designs, equipped with modern and innovative lighting solutions that help create just the right atmosphere inside the elevator. Our ceilings are designed to give the best possible lighting quality while avoiding glare, ensuring every elevator trip is a pleasant and safe one. KONE's lighting solutions are also energy efficient – our LED lights use 80% less energy than traditional halogen lights.

### 3 Choose your accessories

Our accessories are designed to increase convenience for passengers, and include options such as handrails, seats, car operating panels, information screens, and tenant directories. KONE accessories have been designed to meet the specific requirements of different users and building types. For example, we offer special graphics designed for car operating panels in senior housing and children's hospitals, as well as customizable solutions for office, hotel, and retail environments.

## MATERIALS AND ACCESSORIES FOR ALL PURPOSES

This catalog presents our complete selection of elevator car interior materials and accessories. The options are grouped into two categories: standard and premium. Premium materials and accessories have been created using exclusive materials and components and are designated with **P**.

Each carefully selected item has been designed to be both visually appealing and functional. The collection also contains several accessories that fulfill elevator accessibility and vandal codes.

The materials and accessories presented in this catalog are available for KONE MonoSpace® 500, KONE MonoSpace® 700, KONE MiniSpace™, KONE ReFresh™ 200 and KONE ReFresh™ 800.

For more design inspiration, take a look at the KONE Design Collection car interiors and create your own design with the KONE Car Designer tool: [www.kone.XX/XXXX](http://www.kone.XX/XXXX). Consult your KONE sales contact to discuss your final interior selection and for any additional information and support.

## SELECTABLE CAR ELEMENTS

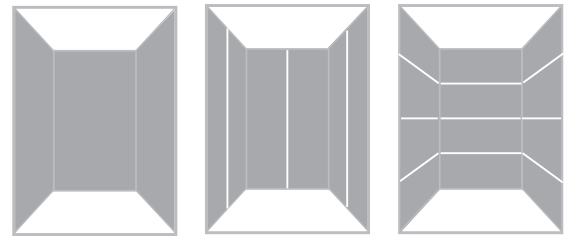


reddot design award  
honourable mention 2012

KONE's new, award-winning horizontal wall panel design is visually appealing and creates a spacious feeling inside the elevator cab.

**Wall panel configuration**

- All materials are available with vertical 2-panel per wall and horizontal 4-panel per wall designs for KONE MonoSpace® 500, KONE MonoSpace® 700, KONE MiniSpace™, and KONE ReFresh™ 800.
- KONE ReFresh™ 200 will feature vertical 1-panel rear wall design. Side wall panel configuration will vary depending on car depth.
- **Material scaling & variability**
- Patterned images not to scale. Consult your sales representative for Car Designer Tool and samples.
- Real wood laminates are made of natural materials so variation will occur.



Vertical 1-panel per wall

Vertical 2-panels per wall

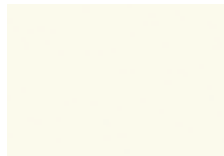
Horizontal 4-panels per wall

**Premium materials**

- Premium materials are designated by **P**. Premium materials, excluding Shangri-La Gold, are not available for KONE ReFresh 200.

**Painted steel**

Not available for KONE ReFresh 200



**P50**  
Cloud White



**P51**  
Misty Gray



**P52**  
Sunny Yellow



**P53**  
Dawn Red



**P54**  
Sky Blue

**Brushed stainless steel**



**F**  
Asturias Satin



**SS1**  
Shangri-La Gold



**H**  
Murano Mirror



**SS2**  
Vegas Gold



**SS3**  
Paris Black

**Mirror polished stainless steel**

**Textured stainless steel**



**K**  
Scottish Quad



**TS1**  
Flemish Linen



**SS4**  
Aqua Weave



**SS5**  
Golden Linen



**SS6**  
Sunlit Twill

**Etched stainless steel**



**ES1**  
Silver Diamond



**ES2**  
Silver Bamboo



**ES3**  
Silver High-rise

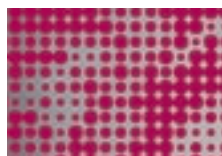


**ES4**  
Golden Bamboo

**Printed stainless steel**



**PS1**  
Radiant Bamboo



**PS2**  
Dot Cloud

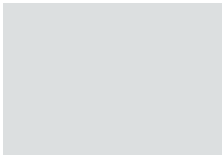


**PS3**  
Morning High-rise



**PS4**  
Blue Diamond

Steel



**Z**  
Zinc coated,  
local paint or decoration  
Not available for  
KONE ReFresh™ 200.

Coated steel



**R30**  
Nordic Gray

Wet polished st st



**A (AISI316)** P  
Acid proof  
Only available for  
KONE MonoSpace® 500  
and KONE MonoSpace® 700  
EN81-71 Cat 1 compliant

Metallic laminate



**L200**  
Oriental Gold



**L201**  
Oriental Bronze  
Due to the special characteristics  
of this material, the appearance  
of brush marks may vary between  
wall panels. Alignment of these  
markings cannot be guaranteed.

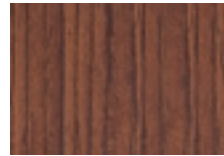
Laminate



**L202**  
Hazel Oak



**L203**  
Almond Oak



**L204**  
Cherry Oak



**L205**  
Ebony Oak



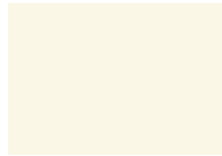
**L206**  
Mandarin Orange



**L207**  
Lime Green



**L208**  
Lotus Blue



**L209**  
Snowberry White



**L226**  
Misty Gray



**L227**  
Sunny Yellow  
Only available for  
KONE ReFresh™ 200.



**L228**  
Dawn Red  
Only available for  
KONE ReFresh™ 200.

Printed laminate



**L210**  
Graphic Bamboo



**L211**  
Chennai Lights



**L212**  
Color Cool



**L213**  
Shanghai Lights

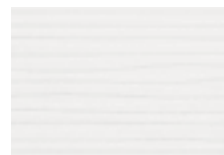
3D laminate



**L214** P  
Aqua Blue



**L215** P  
Aqua Black



**L216** P  
Windwall White



**L217** P  
Windwall Orange

Real wood laminate



**L219** P  
Oak



**L220** P  
Walnut



**L221** P  
Wenge



**L222** P  
Black Oak



**L223** P  
Wild Wenge

Transparent glass

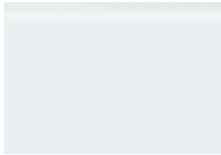
Not available for KONE ReFresh™ 200



TW1  
Glass

For KONE MonoSpace® 500, glass is available for the rear wall only and is one piece. For certain ranges of KONE MonoSpace® 700 and KONE ReFresh™ 800, glass side walls are also available. Please consult your KONE sales representative for details.

Colored glass



GW1  
Siberian Glaze



GW4  
Manhattan Glaze



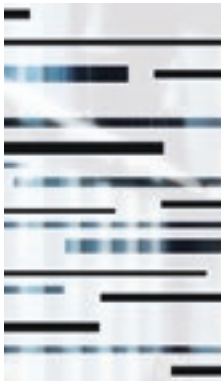
GW10  
Jaipur Glaze



GW11  
Soho Glaze



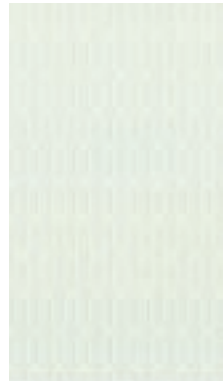
Patterned glass



G5\*  
Silver Flow



G6  
White Diamond



G7  
Silver Chain



G9  
Night High-rise



G11  
Classic Bamboo



G12\*\*  
London Lights



Note

\* These patterns on the glass are mirrors.

\*\* These patterned glasses are transparent.



Metal plate

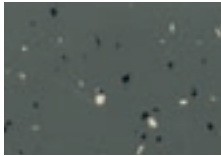


AL  
Aluminum P

Rubber



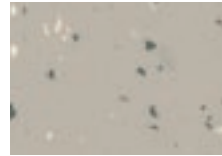
RC6  
Dallas Black



RC20  
Smoke Gray



RC21  
Denver Gray



RC22  
Shell Gray



RC23  
Coral Red



RC24  
Dusk Blue

Vinyl



VF20  
Ash Gray



VF22  
Carbon Gray



VF23  
Steel Gray

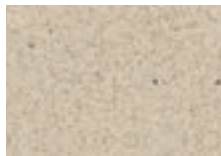


VF25  
Flakey Gray

Stone



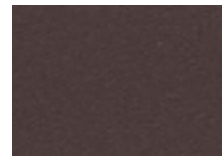
SF30  
Chalk White



SF31  
Grainy Sand



SF32  
Diorite Black



SF33  
Brass Brown



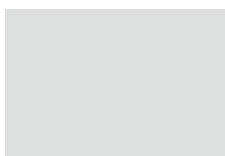
SF36  
Spring Sand P

Local floor



0  
Raw surface for local finishing

Steel



**Z**  
Raw surface  
for local finishing

Coated steel



**R30**  
Nordic Gray

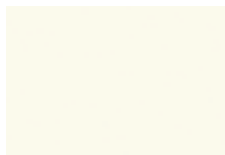
Wet polished stainless steel



**A (AISI316)** P  
Acid proof  
Only available for  
KONE MonoSpace® 500  
and KONE MonoSpace® 700  
EN81-71 Cat 1 compliant

Painted steel

Not available for KONE ReFresh 200



**P50**  
Cloud White



**P51**  
Misty Gray

Textured stainless steel



**K**  
Scottish Quad



**TS1**  
Flemish Linen



**SS4**  
Aqua Weave

Brushed stainless steel



**F**  
Asturias Satin



**SS1** P  
Shangri-La Gold

Mirror polished stainless steel



**H**  
Murano Mirror

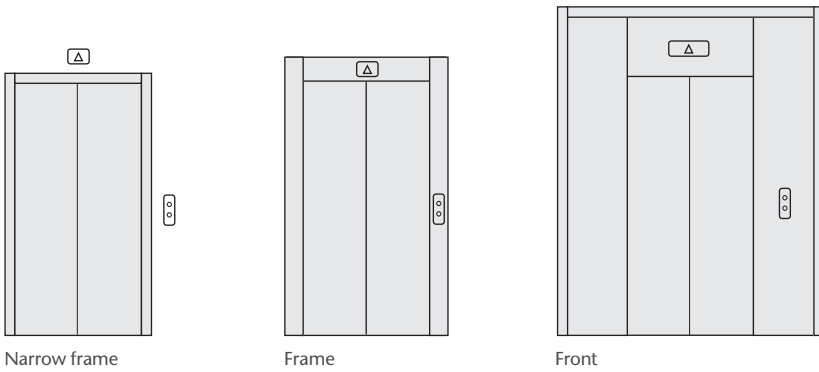


**SS2** P  
Vegas Gold



**SS3** P  
Paris Black

Landing door types



**Note:**  
Finishing availability varies according to door type. Consult your sales representative for more information.

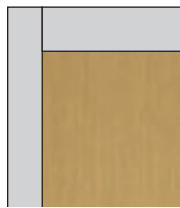
Stainless steel



**F**  
Asturias Satin



**H** **P**  
Murano Mirror



**SS1** **P**  
Shangri-La Gold

Textured stainless steel



**K**  
Scottish Quad



**TS1**  
Flemish Linen



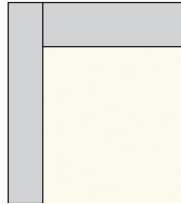
**SS4**  
Aqua Weave

Coated steel

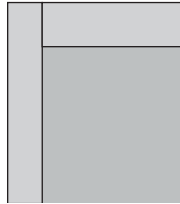


**R30**  
Nordic Gray

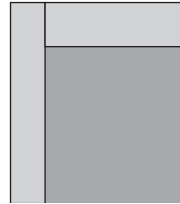
Painted steel



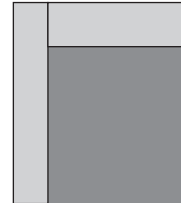
**P50**  
Cloud White



**P51**  
Misty Gray



**P55**  
Thunder Gray  
Landing door only

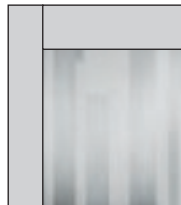


**P**  
Painted steel

Etched stainless steel



**ES2** **P**  
Silver Bamboo

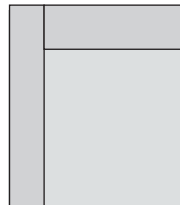


**ES3** **P**  
Silver High-rise



**ES5** **P**  
Brushed Bamboo

Steel



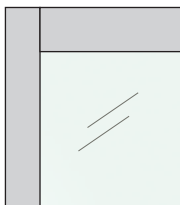
**Z**  
Raw surface for local finishing

Wet polished stainless steel



**A (AISI316)** **P**  
Acid proof  
Only available for  
KONE MonoSpace® 500  
and KONE MonoSpace® 700  
EN81-71 Cat 1 compliant

Glass



**TW1**  
Transparent

Patterned transparent glass



**G14** **P**  
White Bamboo



**G12** **P**  
London Lights

### KSS 140

#### Flush mounted, vandal resistant signalization

Available with vertical paneling only  
 Only partial height available for KONE ReFresh™ 200  
 EN 81-71 Cat 1 compliant



KSC 143  
Partial height

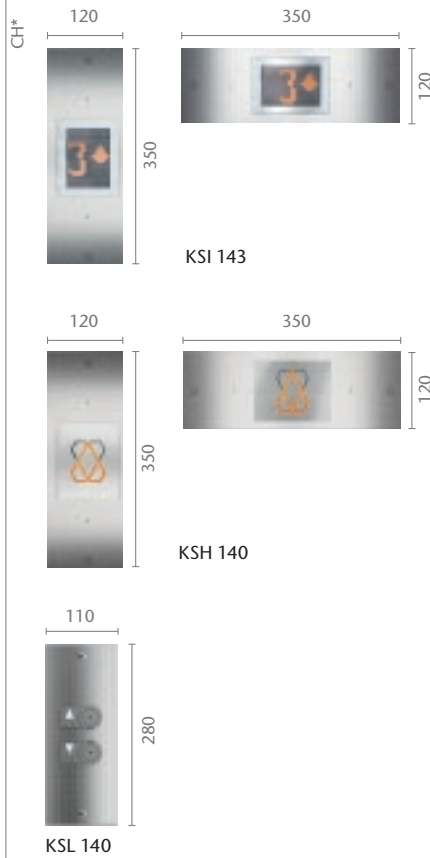
KSC 143  
Full height  
CH\* to be extended

#### Car operating panel (COP)

**Faceplate finishings:**  
 Scottish Quad (K) stainless steel or  
 Asturias Satin (F) stainless steel

**Displays:** Scrolling dot matrix

#### Landing devices



**\* Note**  
 The exact height of the COP depends on  
 the car height (CH) and the selected ceiling option.

### KSS 280

#### Surface mounted signalization

Only partial height available for KONE ReFresh 200



KSC 286  
Partial height

KSC 296  
Mid height  
(width = 218)

  
 reddot design award  
 winner 2012

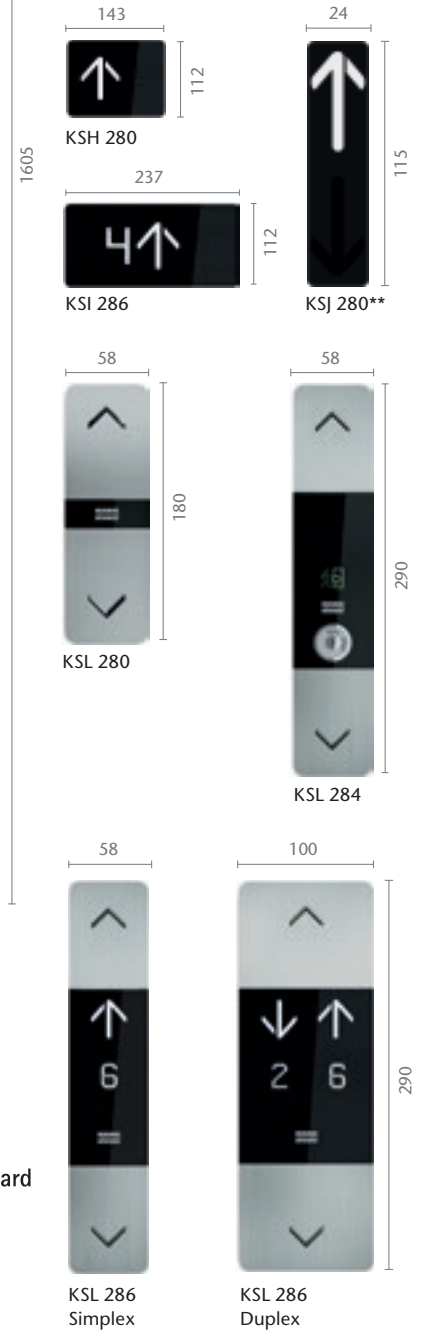
\*\*Lantern in car

#### Car operating panel (COP)

**Faceplate finishings:**  
 Black polycarbonate and deep  
 formed brushed stainless steel,  
 vertical hairline

**Displays:** Segmented LCD

#### Landing devices



## KSS 420

### Surface mounted signalization

Available with vertical paneling only  
Not available for KONE ReFresh 200

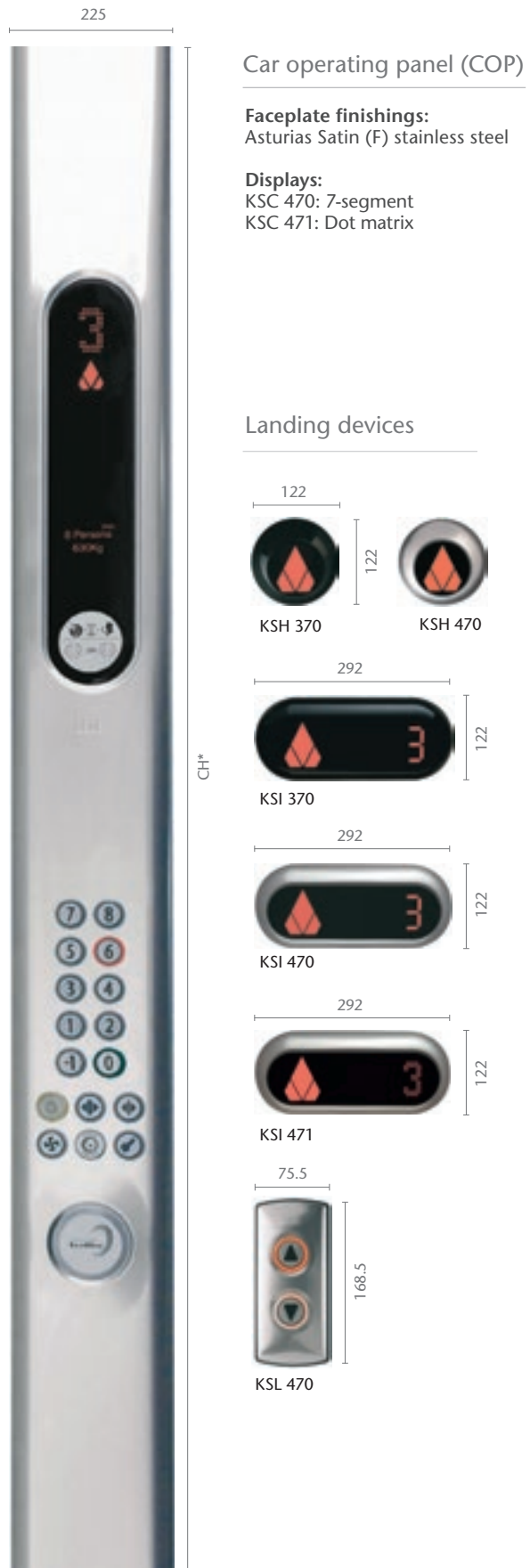


KSC 420  
Partial height

## KSS 470

### Surface mounted signalization

Available with vertical paneling only  
Not available for KONE ReFresh 200



KSC 471  
Full height

\* Note  
The exact height of the COP depends on the car height (CH) and the selected ceiling option.

## KSS 570

### Surface mounted signalization

Available with vertical paneling only  
 Only partial height available for KONE ReFresh™ 200  
 Not available for KONE MonoSpace® 700 or KONE MiniSpace™



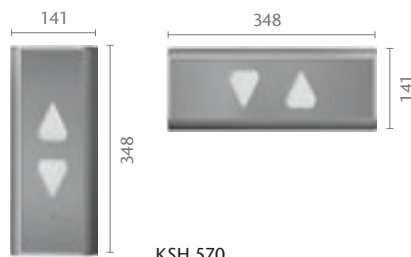
KSC 573/575  
Full height

#### Car operating panel (COP)

**Faceplate finishings:**  
 Asturias Satin (F)  
 Murano Mirror (H)  
 Golden Mirror (HTIN) **P**

**Displays:**  
 KSC 573: Scrolling dot matrix  
 KSC 575: Black and white LCD

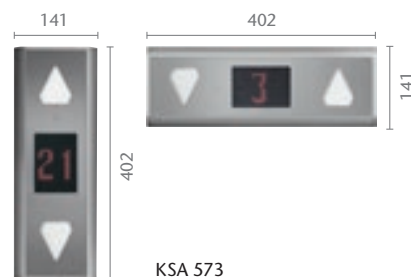
#### Landing devices



KSH 570



KSI 573



KSA 573



KSL 570

## KSS 670

### Flush mounted signalization

Only partial height available for KONE ReFresh 200  
 Square buttons also available for KONE MonoSpace® 700  
 and KONE MiniSpace™



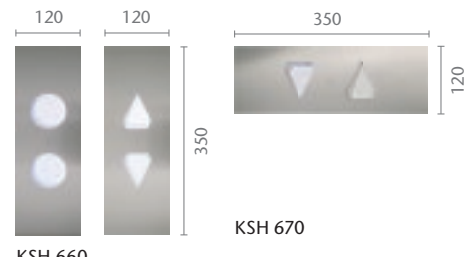
KSC 673/675  
Full height

#### Car operating panel (COP)

**Faceplate finishings:**  
 Asturias Satin (F)  
 Murano Mirror (H)  
 Golden Mirror (HTIN) **P**

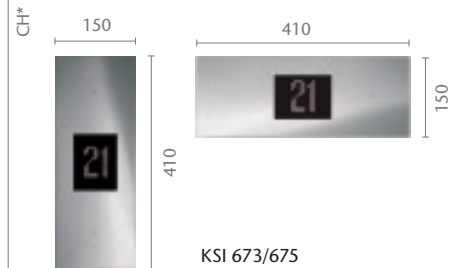
**Displays:**  
 KSC 673: Scrolling dot matrix  
 KSC 675: Black and white LCD

#### Landing devices

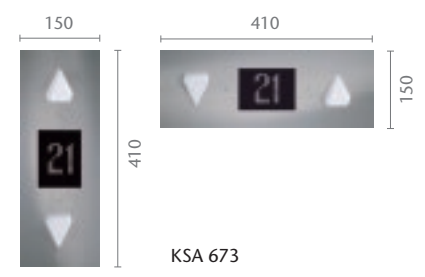


KSH 660

KSH 670



KSI 673/675



KSA 673



KSL 670

**\* Note**  
 The exact height of the COP depends on the car height (CH) and the selected ceiling option.

## KSS 800

### Surface mounted signalization

for KONE Polaris™ Destination Control System (DCS)  
Not available for KONE ReFresh 200



KSC 863  
Full height

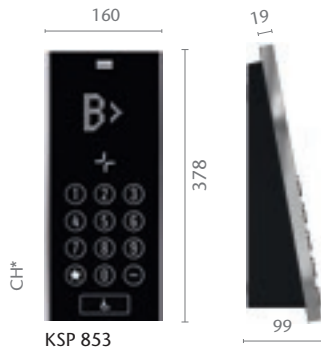
#### Car operating panel (COP)

**Faceplate finishings:**  
Black polycarbonate

**Displays:**  
KSC 863: Scrolling dot matrix

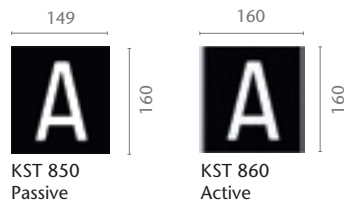
KSC 853 Partial height also available  
Width 200 mm, Height 1300 mm

#### Destination operating panel (DOP)



KSP 853

#### Elevator identifier (EID)



KST 850  
Passive

KST 860  
Active



reddot design award  
winner 2012

## KSS 970

### Flush mounted signalization

Only partial height available for KONE ReFresh 200



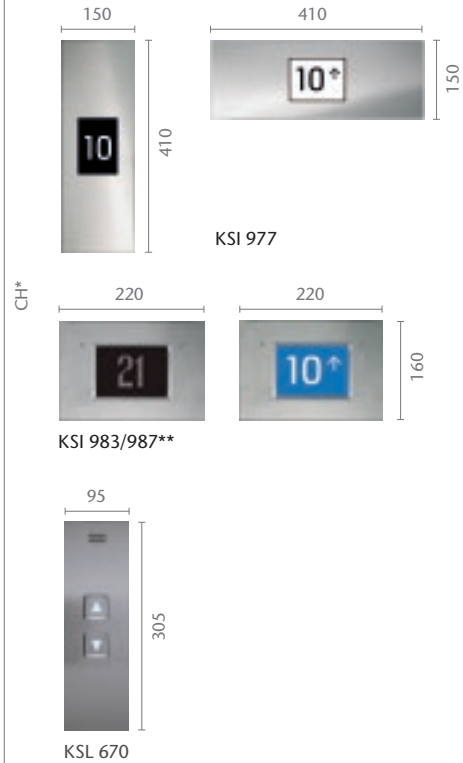
KSC 977 P  
Full height

#### Car operating panel (COP)

**Faceplate finishings:**  
Asturias Satin (F)  
Murano Mirror (H)  
Golden Mirror (HTIN) P

**Displays:**  
KSC 977: LCD Display

#### Landing devices



KSI 977

KSI 983/987\*\*

KSL 670

**\* Note**  
The exact height of the COP depends on the  
car height (CH) and the selected ceiling option.

**\*\* Note**  
Only available for KONE MonoSpace® 700  
and KONE MiniSpace™

# KONE Design signalization

## KSC D20

Partial height Car operating panel (COP)  
Width 200 mm, height 1300 mm



### Solid colors



Amber Red    Blue    Orange    Green    Gray    Brown    Snow White    Ivory Black

### Patterned colors



Red Diamond    Blue Diamond    Citylights Orange    Citylights Green    Gray Bamboo    Brown Bamboo    White Wire    Black Wire



### KSC D20

Partial height Car operating panel (COP)  
Width 200 mm, height 1300 mm

#### Unique designs

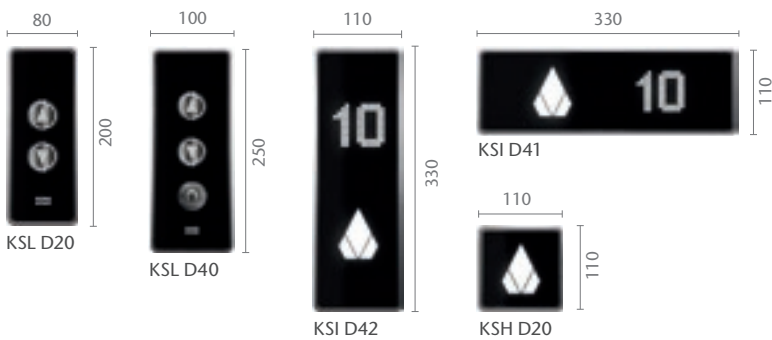


### KSC D40

Full height Car operating panel (COP)  
Width 233 mm, height depends on car height and selected ceiling option



#### Landing devices (KSC D20, KSC D40, Unique/ Numbers and Blocks)



Selection of 8 solid colors is available for landing devices.

**Note:**  
Custom designs are also available.  
Contact your KONE sales representative for more information.



Type: **RL11**, Integrated ceiling  
 Finishings: Cloud White (P50)  
 Misty Gray (P51)  
 Lighting: T5 fluorescent tubes  
 Note: Only available for KONE MonoSpace® 500  
 Not available with EN81-20



Type: **RL12**, Integrated ceiling  
 Finishings: Asturias Satin (F)  
 Cloud White (P50)  
 Misty Gray (P51)  
 Lighting: LED spot lights, round  
 Note: Only available for KONE MonoSpace® 500



Type: **CL88**  
 Finishings: Asturias Satin (F)  
 Cloud White (P50)  
 Murano Mirror (H) <sup>P</sup>  
 Lighting: LED spot lights, round



Type: **CL94**  
 Finishings: Asturias Satin (F)  
 Cloud White (P50)  
 Murano Mirror (H) <sup>P</sup>  
 Lighting: T5 fluorescent tubes <sup>P</sup>  
 Note: EN81-71 Cat1 compliant version available



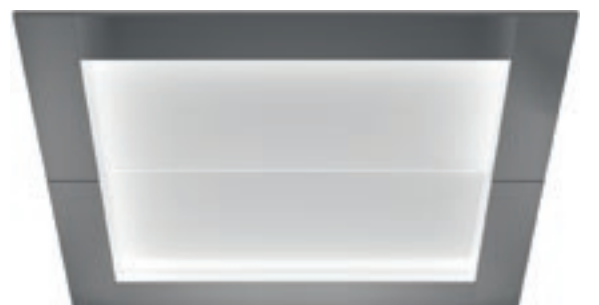
Type: **CL95**  
 Frame finishing: Asturias Satin (F)  
 Murano Mirror (H) <sup>P</sup>  
 Center panels: Cloud White (P50) painted steel  
 Lighting: T5 fluorescent tubes



Type: **CL97**  
 Finishing: Asturias Satin (F)  
 Murano Mirror (H) <sup>P</sup>  
 Shangri-La Gold (SS1) <sup>P</sup>  
 Lighting: LED spot lights, square



Type: **CL98**  
 Finishing: Asturias Satin (F)  
 Murano Mirror (H) <sup>P</sup>  
 Lighting: LED spot lights, rectangular

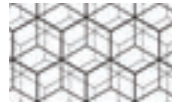


Type: **CL104**  
 Frame finishing: Asturias Satin (F)  
 Murano Mirror (H) <sup>P</sup>  
 Center panels: Cloud White (P50) painted steel  
 Lighting: T5 fluorescent tubes



Type: **CL151** P  
 Frame finishings: Asturias Satin (F)  
 Shangri-La Gold (SS1)  
 Lighting: LED panel with frosted white diffuser,  
 plain or with graphics.

Graphic options for LED panel



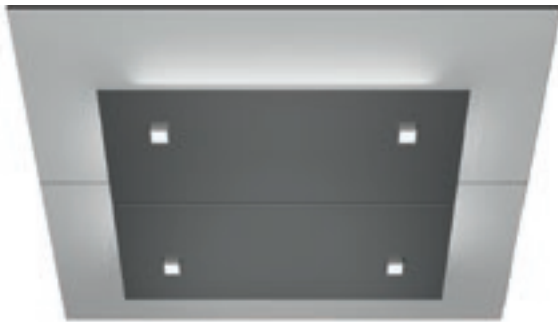
1  
Geometric



2  
High-Rise



3  
Bamboo



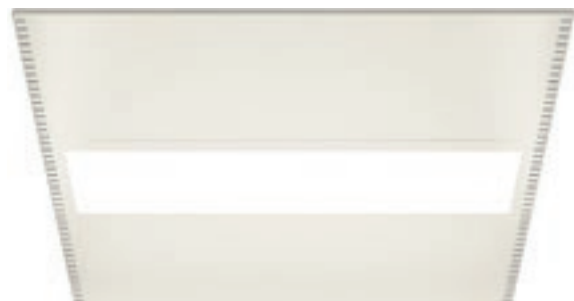
Type: **CL162** P  
 Finishings: Asturias Satin (F)  
 Murano Mirror (H)  
 Top panel: Cloud White (P50) painted steel  
 Lighting: T5 Fluorescent tubes and LED spot lights, square



Type: **CL181** P  
 Finishings: Asturias Satin (F)  
 Murano Mirror (H)  
 Shangri-La Gold (SS1)  
 Vegas Gold (SS2)  
 Lighting: LED  
 See below for actual CL181 ceiling installed in car and page 23  
 for full car image.



Type: **CL193** P  
 Frame finishing: Asturias Satin (F)  
 Center panels: Cloud White (P50) painted steel  
 Lighting: T5 fluorescent tubes



Type: **LF1**  
 Frame finishing: Asturias Satin (F)  
 Cloud White (P50) painted steel  
 Misty Gray (P51) painted steel  
 Lighting: T5 fluorescent tubes  
 Note: Only available for KONE MonoSpace® 700  
 EN81-71 cat 1 compliant version available



Actual CL181 ceiling installed in car



CL181



**HR61\***  
Round  
Finishings:  
Brushed stainless steel (F)  
Mirror polished stainless steel (H) **P**



**HR62**  
Square  
Finishings:  
Brushed stainless steel (F)  
Mirror polished stainless steel (H) **P**



**F**  
Brushed stainless steel



**H** **P**  
Mirror polished stainless steel



**HR63** **P**  
Flat  
Finishings:  
Brushed stainless steel (F)  
Mirror polished stainless steel (H)



**HR64\***  
Round, bent ends  
EN 81-71 Cat 1 compliant  
Finishings:  
Brushed stainless steel (F)  
Mirror polished stainless steel (H) **P**  
Golden brushed stainless steel (SS1) **P**



**SS1** **P**  
Golden brushed stainless steel



**HR65\***  
Triangular, bent ends  
EN 81-71 Cat 1 compliant  
Finishings:  
Brushed stainless steel (F)  
Mirror polished stainless steel (H) **P**



**HR81\***  
Round, sidewall and floor mounted  
Finishings:  
Brushed stainless steel (F)  
Mirror polished stainless steel (H) **P**  
Golden brushed stainless steel (SS1) **P**  
Not available for KONE ReFresh™ 200



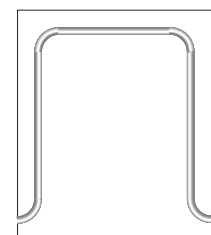
**HR94** **P**  
Round, bent ends  
EN 81-71 Cat 2 compliant  
Finishings:  
Brushed stainless steel (F)  
Only available for KONE MonoSpace® 700  
and KONE MiniSpace™



**HR31**  
Round  
Aluminum (LBE) with black  
end caps



**HR34**  
Round, bent ends  
Aluminum (LBE) with  
black end caps



\* Also available as a  
continuous handrail

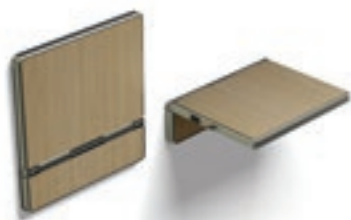


**HR71\*\***  
Round  
Dark Wood with brushed  
stainless steel fixings (WDF)

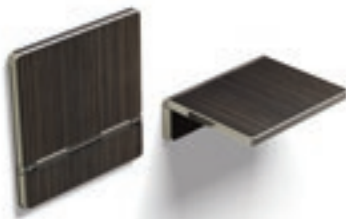


**HR71\*\***  
Round  
Light Wood with brushed  
stainless steel fixings (WLF)

\*\* Golden brushed stainless **P**  
steel fixings also available



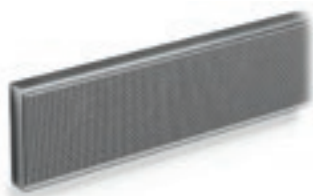
FS1  
L202  
Hazel Oak



FS1  
L205  
Ebony Oak



FS1  
L224  
Black Coal



BR1  
Flemish Linen (TS1)



BR1  
Lava Black (RC26)



BR1  
Light Wood (WL) **P**



BR1  
Dark Wood (WD) **P**

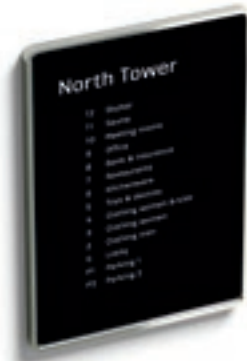


F  
Asturias Satin



SS1  
Shangri-La Gold **P**

Tenant directory



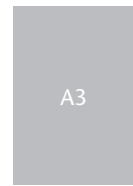
**TD1**  
Frame finishing: brushed or polished aluminum

The printed tenant directory is completely customizable and can be easily updated according to the customer's needs.

Sizes



**TD1**



**TD2**

Directories can be installed either vertically or horizontally.

Digital info screens



**IS08**  
Standard version, 8.4" display  
Surface mounted

**IS15**  
Premium version, 15" display **P**  
Surface mounted

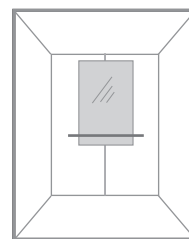
Additional features may be available. Consult your sales representative for more information.

Frame finishing: brushed or polished stainless steel.

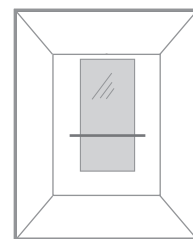


SIZES AND POSITIONING

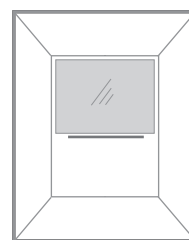
Mirrors can be located on the rear and side walls of the elevator car. Mirror and handrail dimensions are determined by the wall width. Please consult your KONE sales representative for details.



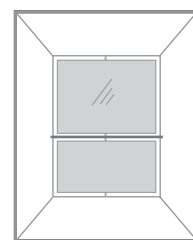
**MR1**  
Partial width/Partial height



**MR1**  
Partial width/Mid height



**MR1** **P**  
Full width/Partial height



**MR1** **P**  
Full width/Full height



KONE provides innovative and eco-efficient solutions for elevators, escalators, automatic building doors and the systems that integrate them with today's intelligent buildings.

We support our customers every step of the way; from design, manufacturing and installation to maintenance and modernization. KONE is a global leader in helping our customers manage the smooth flow of people and goods throughout their buildings.

Our commitment to customers is present in all KONE solutions. This makes us a reliable partner throughout the life cycle of the building. We challenge the conventional wisdom of the industry. We are fast, flexible, and we have a well-deserved reputation as a technology leader, with such innovations as KONE MonoSpace®, KONE NanoSpace™ and KONE UltraRope®.

KONE employs close to 52,000 dedicated experts to serve you globally and locally.

## KONE CORPORATION

### Head office

Kartanontie 1  
P.O. Box 8  
FI-00331 Helsinki  
Finland  
Tel. +358 (0)204 751

### Corporate offices

Keilasatama 3  
P.O. Box 7  
FI-02151 Espoo  
Finland  
Tel. +358 (0)204 751

[www.kone.com](http://www.kone.com)